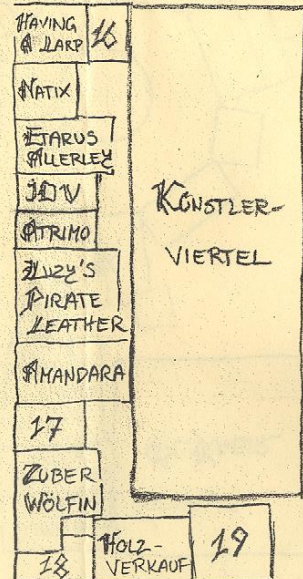
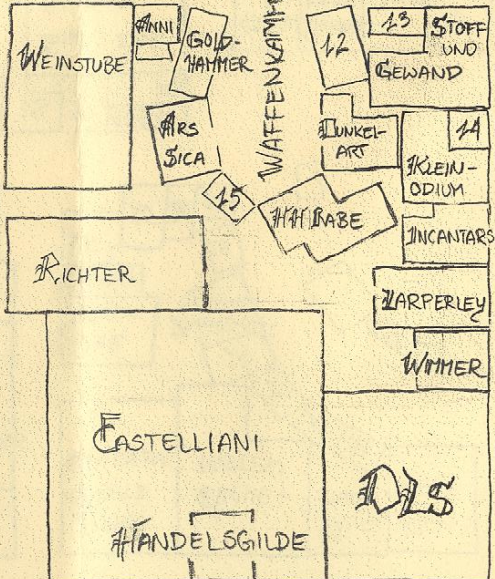
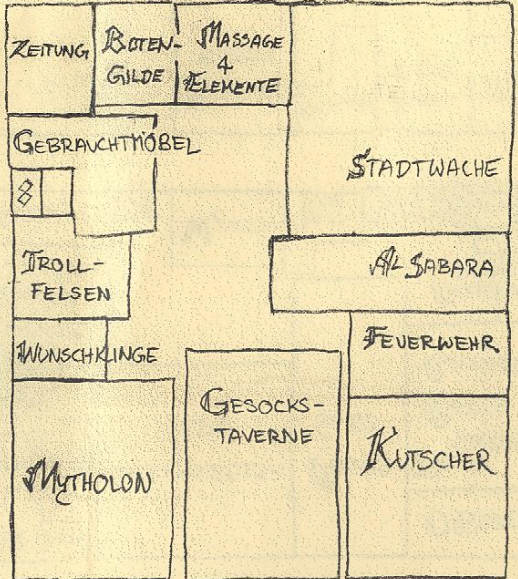
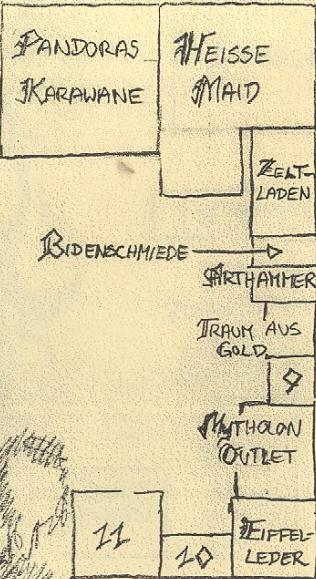
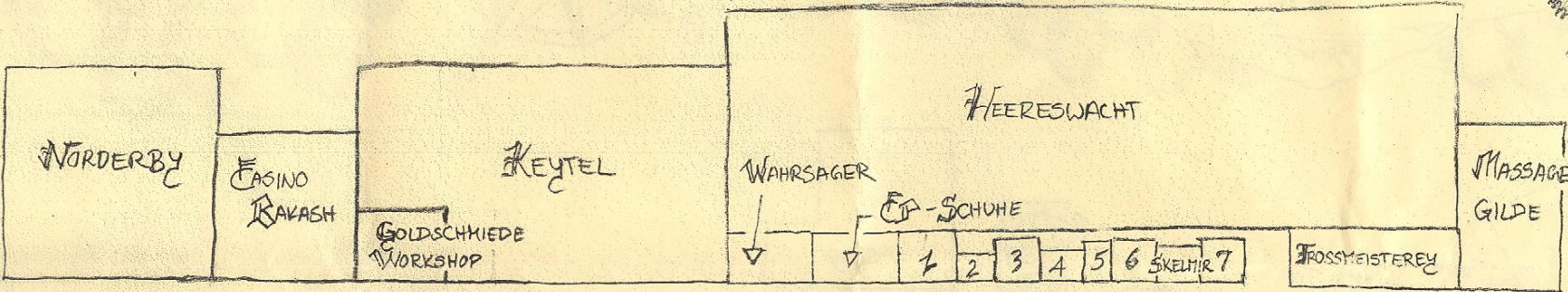
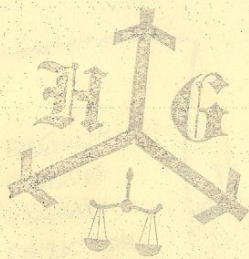


KARTE DER STADT

- Legende
- | | | |
|----------------------|----------------------|-----------------|
| 1 NARSILION | 8 FELL FOR FASHN | 15 RÜSTZEUG |
| 2 KNORRAX | 9 BRAUCHTUM & HANDEL | 16 SCHÄFERWAGEN |
| 3 GANE WAGEN | 10 FEDERKRAM | 17 EIS BOLD |
| 4 NORDWIND | 11 AMBASSADOR | 18 PROP CORN |
| 5 DVALINN | 12 SILBERWALD | 19 ZUBER DANSE |
| 6 L'ATELIER D'AVANRA | 13 EXPEDITION | INTERNALE |
| 7 KAMMAELEON | 14 LARP LEDEREREY | |



11 10 EITTEL-LEDER

HANDELSGILDE

18 HOLZVER-KAUF 19

ZWIRBEL-BÄRTE 20
ENGELS-SCHMIEDE
TAPFERES SCHNEIDERLEIN
SCHUHMACHEREI
RETTENSTRICK
22 BARBIER

MA-ZELTE
MAMMUSCH KA
NORD-LÄNDER
MOTIV-WUNSCH
VULKAN-SCHMIEDE
ZARP-LIFE 23
WYVERN
DOWN-HOLE
BRAUENDE BRÜDER
O'GRADY
FREIES HANDELSHAUS
BERTS
BAVERNGE-MUS
MARKETEN-DEREY
LARIA

ERIKS BESTE
WANDERN
FISCHE-MISTEN
NACHT-STURK
MET-WABE
30 31 32
29
ZWERGEN-SCHMAUS
28
27
26
25
24
DER KUDDA
ALCHIMIST

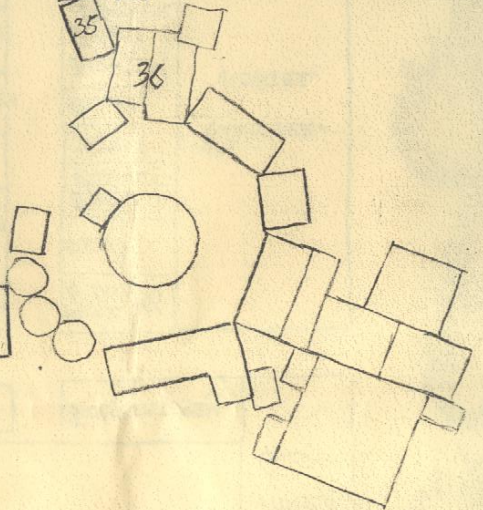
KNOCHEN-BRECHER
EDEL UND VOLK
McONIS
34
35
36
TEEHAUS
AL KABIR
ARMEN MISSION
FR. SONNEN-SCHENS
GEWANDSCHNEIDEREY

KRABBE
JENS SIN
FUTTESTUW

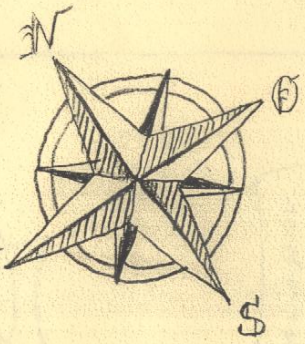
SEELEN-TRÖSTER
BREAUARI
ZARP-ZELTE 37

38 39 40 41
42
GILDE DER WAFFEN
MEDICI

43 44 BEEREN-WEINE
REFERE 45
ZIESA & ZAROS
SL/HQ



Kartographiert
von
Alisa Valinn
Kaja und Tyron



- Legende
- | | | |
|-------------------|----------------------|--------------------|
| 20 ELBENSCHMIEDE | 29 MOORHOF | 38 DER BOGENMACHER |
| 21 THE FOX | 30 LAIBEREIEN | 39 TON IN TON |
| 22 KÖRPERKNETEREY | 31 KARTOFFELHAUS | 40 HEIDESCHTUCK |
| 23 VEH MERCATUS | 32 PULLED FORK | 41 BAOL & SKIN |
| 24 GELWIRKRAMEREY | (33 BEERENWEINE) | 42 CELTIC SUN |
| 25 ALLERLEI HOLZ | 34 BICKBEERN | 43 SÜSSKRAM |
| 26 ARS ANGLIA | 35 SCHLOSSBECK | 44 QUARKINI |
| 27 NETSIEDER | 36 ZUBER ROTER STERN | 45 BARBARESPIESS |
| 28 DIE FISCHER | 37 FUSELIX | |